



# Sugarloaf Ski Club

# NEWS

Published on the Mountain • Carrabassett Valley • Maine • Homecoming 2018

## What's Inside

- 2 • Ski Club Events
  - Sugarloaf Art Show
- 3 • King Cummings Service Award
- 5 • Outgoing President's Message
- 6 • Ayotte Golf Tourney
- 8 • Maine Huts BBQ
- 12 • Ski Museum News
- 14 • Sugarloaf Hall of Famers
- 16 • CVA News
- 19 • WinterKids Return

## Sugarloaf Mountain Ski Club Officers

President - Ginny Bousum  
V. President - Steve Schaefer  
Treasurer - Phil Hunter  
Secretary - Nancy Holliday

### Board of Directors:

Steve Arner  
Ginny Bousum  
Venise Fournier  
Jon Hellstedt  
Tom Hildreth  
Kim Kearing  
Rick Ray  
Peter Smith  
Lev Steeves  
John Thompson  
Joyce Tobias  
Joe Tutlis  
Peter Van Alstine  
Patrick Willihan  
Jim McCormack - SMC  
Kate Punderson - CVA  
Bruce Miles - Ski Club Executive Director

Ski Club Members:  
Approx. 1,400

## President's Message

### Ginny Bousum

As I began this, my first "President's Message," I reflected on club presidents of the past 68 years. I take pride in being included in this group of avid dedicated Sugarloafers. There are some big footprints to follow!

Since half-way through the last century, Ski Club members have enjoyed skiing at Sugarloaf, socializing with fellow ski enthusiasts, recalling the old days while appreciating modern improvements to our sport, and supporting community-building events and projects, all the while helping local youngsters participate in the sport.

As we look back, we are also looking forward: there is a lot of "New" at our club. I applaud the considerable efforts of the club's board members resulting in a simpler, more efficient and modernized Sugarloaf Ski Club, while continuing a focus on providing the opportunity for kids to excel in skiing and snowboarding.

Our simplification began  
*Continued on page 11*



*Sugarloaf Ski Club President, Ginny Bousum*

## King's Kids

### *A new initiative to get local kids on the slopes*

Our Sugarloaf Ski Club believes that all local kids deserve an opportunity to participate in skiing and riding winter programs. We are pleased to announce a new fundraising campaign led by a generous \$500,000 endowment grant from the King and Jean Cummings Trust. The endowment and subsequent fundraising initiatives by the Sugarloaf Ski Club - to be called "King's Kids" - will support its continued ability to ensure skiing and snowboarding programs are affordable and accessible to local youth. The funds will provide increased opportunity for Franklin and Somerset County students to participate in Nordic, Alpine skiing, and riding programs at Sugarloaf Mountain.

The Sugarloaf Ski Club has supported local kids who enjoy programs such as the schools' Ski-Skate days as well  
*Continued on page 4*

# 2018-19 Ski Club Events Calendar

For events info check [www.sugarloafskiclub.org](http://www.sugarloafskiclub.org) or email questions to [info@sugarloafskiclub.com](mailto:info@sugarloafskiclub.com)

## October

October 6 and 7  
Homecoming  
Weekend  
Ski Club Booth  
Saturday from 9-3  
Sunday from 9 – noon  
Base Lodge

October 6  
Ski Club Members  
Annual Meeting  
Saturday  
4:00 to 4:30 pm  
4:30 to 6:00 pm -  
Social at the  
Bill & Joan Alfond  
Competition Center

October 27  
Join Ski Club  
members at  
Maine Ski Hall of  
Fame Induction  
Sunday River

## December

December 1  
Competition Center  
Volunteer Kickoff  
Social  
4:30 – 6:30 PM  
Bill & Joan Alfond  
Competition Center

December 1  
CVA Weekend  
Programs star

December 8  
Demo Days

December 22  
Holiday Fashion Show

December 28  
Climb for a Cure

## January

January 26  
Sugarloaf Charity  
Summit  
King Pine Room

December 27  
Premier of Teton Gravity  
Research movie  
Gondola Room  
Bill & Joan Alfond

Competition Center.

## February

February 2  
Beer Tasting  
Scholarship Fundraiser  
Bill & Joan Alfond  
Competition Center

February 18  
McKay- Waddle  
Ski Race

## March

March 1-2  
7th Annual  
WinterKids  
Downhill 24  
9am Fri. to 9am Sat.

March 23  
Annual SnowBall

# Sugarloaf Art Show 2018

Supporting kids in the Arts

This year's show will feature the work of over 40 fine Maine artists and craftsmen.

5% of money raised by artist sales at this show goes to scholarships given by UCA annually to three local high school graduates preparing to move on to study art or a related field.

## For the Kids

The show will also hold two kids programs in the base lodge:

- **What are your Superpowers?**  
Mask & Cape making session.  
9 - 10:30 and 11-12:30
- **Up-cycle It: Bottle Cap Jewelry**  
1-2:30 and 3-4:30 on Saturday  
In the base lodge. Sign up at event. First come first serve.

For more information about UCA and the scholarship program, please visit [www.upcountryartists.com](http://www.upcountryartists.com).

Art Show is 9-5 on Saturday and 9-4 on Sunday.

# Yes, I would like to be a member of the Sugarloaf Ski Club!



Name: \_\_\_\_\_ Address: \_\_\_\_\_

City: \_\_\_\_\_ State: \_\_\_\_\_ Zip: \_\_\_\_\_ Email: \_\_\_\_\_

( ) Individual \$30 ( ) Couple \$50 ( ) Family \$60 ( ) This is a renewal. I've been a member since: \_\_\_\_\_

Please make checks out to: Sugarloaf Ski Club, • 9008 Main Street • Carrabassett Valley, Maine 04947  
Or join at our online website store at [sugarloafskiclub.com](http://sugarloafskiclub.com)

## King Cummings Service Award 2018

The King Cummings service award is given annually to an individual or individuals within the CVA community who have performed valuable service beyond normal expectations and have made an outstanding contribution to the growth and development of Carrabassett Valley Academy.

Those fortunate enough to have known King Cummings and to have witnessed his generosity, caring and commitment to young people can truly appreciate the full meaning of this award. King helped found, fund

and direct CVA through its earliest years. His vision lives on today and his spirit is alive in the actions and commitment of people such as this year's recipients.

The 2018 recipients of the King Cummings Award are Bill and Joan Alford. Bill and Joan are long time Sugarloafers, creating memories, building traditions, and striving for excellence with their family, children, and grandchildren at Sugarloaf. During their Sugarloaf journey, they have also become strong supporters of Carrabassett Valley Academy and the

Sugarloaf Ski Club

In December of 2015 Bill and Joan made a \$1,000,000.00 gift to Carrabassett Valley Academy, through their foundation, to build a new competition center at Sugarloaf Mountain. Their vision and financial commitment challenged and provided the inspiration for the CVA Trustees, their partners, and key stakeholders such as the Sugarloaf Ski Club, Sugarloaf Mountain Corporation, the Town of Carrabassett Valley, Sugarloafers of all ages, and new and old friends of the Academy

to successfully raise an additional \$1,200,000.00. The new competition center became a reality and was built in time for an open house at Sugarloaf's Homecoming weekend in October of 2016. The Bill and Joan Alford Competition Center was officially dedicated on December 10, 2016. In the spring of 2017 Sugarloaf Mountain hosted the US Nationals and the new Bill and Joan Alford Competition Center impressed all who participated and attended these events. This incredible facility provides current and future CVA

*Continued on page 4*

*An independent insurance agency that works for you.*



· COLE · HARRISON ·

Call Jim today for a review  
of your current insurance  
**207-235-2642**

**Jim Wilson** • Branch Manager  
Carrabassett Valley, Maine  
**Jim Harrison** • CIC

## King's Kids *Continued from page 1*

as winter-long weekend programs at Sugarloaf. Now the goal is to expand this program through King's Kids.

King and Jean Cummings and their family, being involved in Sugarloaf from its earliest days, were passionate about skiing and this geographical region. They strongly believed that everyone should have the opportunity to participate in the sport their family so cherished.

The Sugarloaf Ski Club is striving to at least double this generous gift from the Cummings Trust and we asking that our strong and long-time committed members will help us reach our goal!

### King's Kids Donation Opportunities:

Pledged gifts can be spread out over four years if the first donation is received before December 31, 2019. Other gifts can be spread out over three years.

All pledges must be paid in full by December 31, 2021. Gifts are tax deductible. Gifts can be made by cash, credit card, check, and stock publicly traded securities. For more information or to make a donation, contact Bruce Miles at [info@sugarloafskiclub.com](mailto:info@sugarloafskiclub.com).

**Our goal is to raise over \$1,000,000 to support King's Kids.**

### **Suggested levels of giving:**

Snowfields  
\$25K +

Winters Way  
\$15K- \$24,999

Narrow Gauge  
\$10K- \$14,999

Tote Road  
\$5K - \$9,999

Board Walk  
\$1K - \$4,999

Whiffle Tree  
\$500-\$999.00

Birches  
\$25-\$499

## Cummings Award

*Continued from page 3*

and Sugarloaf families the opportunities to create their memories, build their traditions and strive for athletic excellence.

Bill and Joan knew King personally and are well aware of his legacy. Their vision, inspiration and financial commitment to this project would have made King Cummings very proud. Bill and Joan; your awareness of King's legacy as you build a legacy of your own makes giving you this award very special to all of us at CVA.

# C.O. BECK

Custom Metal Roofing for Fine Homes



Visit us on the web or call for more information about our quality, lifetime and maintenance-free standing seam metal roofs.

*Serving Maine homeowners since 1920*  
**C.O. BECK & SONS INC**  
ROOFING & SHEET METAL

207.872.5861 • WATERVILLE, ME • [www.cobeckroofing.com](http://www.cobeckroofing.com)

## Outgoing President message

### Bruce Miles

Serving as the Ski Club President for the last 14 years has been a true honor and a very rewarding experience.

When I took the helm in 2004 I had some important goals in mind.

One was to build a new timing facility on the mountain, two, was to see a new Competition Center built and three was to increase our scholarship program funding and to expose more local kids to the sport we all love.

Thanks to an incredibly hard working board of directors, many volunteers and the support of the

very generous Sugarloaf Ski Club Community, we have accomplished the first two goals and are continually working on the third. While doing so we have also strengthened our relationship with our three very important partners, Sugarloaf Mtn. Corp., Carrabassett Valley Academy and the Town of Carrabassett Valley.

The three of us, SSC, SMSC and CVA are very fortunate to operate in the town that we do. Carrabassett Valley is a very progressive town and the providing of opportunities for local children is very

important to it. I can't say enough about how supportive our community has been.

I am very pleased that long time board member Ginny Bousum agreed to be President of our club. Ginny and I have worked together for many years. She has been the President of our Sugarloaf Regional Ski Educational Foundation for more years than I can remember. I look forward to working with her and our board as the Executive Director of the new Sugarloaf Ski Club.

We taking on some big

challenges that will have a significant impact on our local kids who want to learn to ski and ride on Sugarloaf Mtn. I hope you will all join us in this very worthwhile endeavor. I want you to think about what an impact the sport of skiing has had on your life and the I want you to help us share our love of the sport with the next generation. I know that together we can make a difference.

See you on the hill  
Bruce

# MORONG FALMOUTH

*Bill and Peter Sowles are pleased to support  
the Sugarloaf Ski Club*



[www.morong.com](http://www.morong.com) • 1-800-356-4020

187 Route One, Falmouth, Maine 04105 • Sugarloafers since 1958

# Sugarloaf Ski Club Golf Classic raises over \$22,000 to benefit the Dick and Martha Ayotte Scholarship Fund.

Sugarloaf Ski Club Golf Classic raised over \$22,000 to benefit the Dick and Martha Ayotte Scholarship Fund.

On Friday, June 29th, the Sugarloaf Ski Club and the Sugarloaf Golf Club hosted the 37th Ayotte Golf Classic, an annual fundraiser for the Dick and Martha Ayotte Memorial Scholarship Fund. The 122 players who participated enjoyed Maine's number one golf course (Golf Week Magazine, April 10, 2017) and a fabulous luncheon at Strokes generously spon-

sored by The Bag and Kettle restaurant.

The combined efforts of Sugarloaf Mountain Corp., Sugarloaf's golf course staff and many Ski Club volunteers contributed to a successful event. Those volunteers included Peter Smith, Peggy Willihan, Suzanne Hall, Steve and Laura Schaefer, Kelly Dooling, Jenny Wiltse, Jerry Murphy, Steve Pierce, Scott Cushing, Michelle Allot, Carolyn Lepage, Tom Hildreth, Tom and Heidi Pelletier, Waylon Wolfe, Sally Al-

lard, Scott Hoisington and Cindy Foster. All of this was under the direction of event co-chairs Patrick Willihan and Ginny Bousum.

All proceeds go directly to support the scholarship fund. The following list demonstrates the outstanding community support this event receives: AG New England, ARC Engineering Co., The Bag and Kettle, C O Beck, Belgrade Lakes Golf Club, BLIZ, Carrabassett Coffee Co., Carrabassett Valley Academy, Cole Harrison

Insurance Co., CSM Real Estate, Bob Daigle, Darlings Auto Group, D'Ellies, Franklin Savings Bank, The Irregular, Jordan Lumber Co., Landry/French Construction, Merriam Vineyards, Morong Falmouth, Mountain View Cottages, Mountainside Realty, Northern Lights, the Pelletier family, The Pierce family in memory of Jean Thayer, Pine State Trading, The Rack, Shipyard Brew Haus, Skowhegan Savings Bank, Harry Stout, Sudbury Boat Care Products, SugarBowl, Sugarloaf Mountain Corp,

**FRESH DOUGH**  
WOOD FIRED **PIZZA** BRICK OVEN

**THE BAG & KETTLE**  
BREW PUB  
FOOD & DRINK  
SINCE '69  
ALPINE ATTITUDE ALES

**BREWS Blue Monday & BLUES**

**TROUT BROOK GOLD**  
Light Golding's Hops

**PICK POLE PALE ALE**  
Copper, Malt, and Hoppy

**UNCLE'S WINTER ALE**  
Dark and Full Bodied

**ALPINE RED RASPBERRY**  
Light n Fruity

Our elevation at Sugarloaf raises us high above all other eastern micro breweries.

The clear, sparkling, mountain waters that we use to formulate Master Brewer P. Mulligan's exacting recipes give our patrons a brew experience both lofty & unique.

Would you expect anything less from **THE BAG & KETTLE** in our 43rd year

**RED SNAPPER ALE**  
Bag's Tribute to Celtic-Style Red Ale

**JOE STOUT**  
Creamy, Rich Stout, brewed with Carrabassett Coffee Espresso Beans

**THE BAG'S POTATO ALE**  
Amber Ale, Strong and Malty

**HALF PIPE PORTER**  
Dark, Robust and Malty

**Mountain Brewed Ales from The BAG & KETTLE Brewing Company**  
On the Mountain at Sugarloaf/USA Village Center 237-2451



Left to right Micah Lashar, Kelly Welch, Laurel Lashar, Jay Lashar

### SAVE THE DATE

The 2019 Sugarloaf Ski Club Golf Tournament will take place on Friday, June 28th, at the Sugarloaf Golf Club.

Sugarloaf Golf Club, Sugarloaf Area Grocers, Sugarloaf Ski Club, Sunday River Corp, Town of Carrabassett Valley, Tranten Family Markets, Tufulio's, UBS, United Insurance,

Valley Gas and Oil Co., Peter Webber Family, Western Maine Pharmacy, and Winterstick.

The Dick and Martha Ayotte Scholarship Fund

assists needful youngsters in the Sugarloaf region and the state of Maine with the costs associated with their ski and snowboard training programs at Sugarloaf Mountain. The Sugarloaf

Ski Club is recognized by the IRS as a 501(c)(3) non-profit organization and has been supporting kids on the mountain since 1950.

## Enjoy our Maine winter!

Thinking of a second home near the slopes?  
Give us a call and find out why everyone loves to  
**BANK with FRANK!**



# Franklin Savings Bank



**800-287-0752 - FranklinSavings.Bank**  
Farmington Rangeley River Valley Jay Ellsworth Skowhegan Wilton

## Campbell Field Bridge Rebuilt



The Campbell Field Bridge, washed out in last spring's rain storm will be ready for Homecoming.

The bridgework included the construction of a new structural steel (weathering steel) bridge that clear spans, new concrete foundations, abutments and wing walls, as well as improvements to the approaches, pressure treated wood deck system and riprap protection.

The bridge connects the Touring Center with the Narrow Gauge and Maine Huts & Trails hiking, biking and ski touring trail network.



## HAPPY TUNES!!

Valley Crossing on Route 27 • Next to Tufulio's  
7 miles South of the Access Road • 207-235-TUNE (8863)  
Email: happy@skihappytunes.com

### HOMECOMING SPECIAL

20th Annual Used Ski & Kayak Sale  
(consignments welcome)

# 50% OFF TENT SALE

Skis, Boots, Helmets, Goggles,  
Jackets, Gloves, Speedsuits, etc.

### EXCEPTIONAL WINTERSTEIGER SKI & SNOWBOARD TUNING

Satisfaction guaranteed

Experience a Happy Tune and you WILL feel the difference!

### HIGH PERFORMANCE DEMOS

DYNASTAR, BLIZZARD, ROSSI, SALOMON, ELAN

### CUSTOM BOOT-FITTING

By appointment; call 235-TUNE (8863)

Lange, Salomon, Tecnica, Rossi,

Alpina, Dalbello, Scarpa, Scott & Daleboot dealer

### WIND-HOLD? NO WORRIES!

SKINS, TELE & AT Boots and BINDINGS from Scarpa, Scott, G3,  
22Designs, Salomon, Dynafit, Marker, Fritschi & BCA



## Maine Huts & Trails News & Annual BBQ Info

We are fortunate to have so many volunteers who help us with all that needs to be done! In June we had many join in for some really productive (and fun) trail work weekends. The regular crew has been working on bridges and trail surfaces this summer and the CRNEMBA Trail Fest weekend in August at Poplar Hut helped make some great improvements to the Sticky Trail.

One of our volunteers, Frances Killea, will run the MH&T system from Grand Falls to Stratton Brook in one day as a fundraiser for MH&T in October. Check

out her Go Fund Me page. <https://www.gofundme.com/hut-hut-hike-a-maine-huts-ultra>. Also, on sale now is a special edition New Balance 990 shoe that was developed in partnership with LLBean with both companies having generously donated a portion of sales to us this year.

This past winter the Stratton School selected MH&T as the focus of their National Geographic community project. The students collected and donated board games for our guests to enjoy at the huts – we are so appreciative of

The MH&T Member BBQ this year will have a whole new format. This year the BBQ will be in Kingfield at “The Barn” at Mountain Village Farm B&B from 1:00-4:00 on Sunday, October 7th. The menu will feature BBQ pulled pork and squash soup from MH&T, and sides and desserts from area restaurants. Immediately following the BBQ, there will be a special “Blues in the Barn” concert to wrap up the day! Everyone is invited, but if you are a member, the BBQ is free! Be sure to sign up or renew your Maine Huts & Trails membership for Homecoming Weekend.

their efforts.

Maine Huts Lager, from Baxter Brewing, made its preview on tap this past winter. The MHT cans hit store shelves in early

August. Thanks to so many, it is a great success and we are grateful to Baxter Brewing for their donation from sales of the MHT Lager.

# NORTHERN LIGHTS STOVE SHOP

30 Years Experience

**GAS & WOOD STOVES & PELLETS**      Rt. 2 & 4 • FARMINGTON • MAINE      **INSULATED CHIMNEY Liners & Systems**

## Sales & Service

**Your Full Service Ski Shop! Also On-Site at Titcomb Mountain!**  
Downhill & X-Country Skis & Accessories

Skis: **ROSSIGNOL** & **FISCHER**      GIRO Helmets  
Boots: **ROSSIGNOL** & **FISCHER**      SWIX Clothing

**TUBBS**      **THULE** Car Rack Systems

**HearthStone**      **HAMPTON**      **MAJESTIC VERMONT** Castings      **JÖTUL**      **HARMAN**      **REGENCY**      **Rinnai**

# 778-6566 • 1-800-789-6566

**"When You Want It Done Right The First Time"**



Upcountry Artists presents

# Sugarloaf Fall Art Show & Sale

Sugarloaf Base Lodge

Skiier's Homecoming • October 6 & 7, 2018

Saturday 9-5 • Sunday 9-4

## ART FOR KIDS!

Saturday in the Base Lodge

Mask & Cape Making - What are your Superpowers?

9 - 10:30AM and 11AM-12:30PM

Up-cycle It: Bottle Cap Jewelry

1-2:30PM and 3-4:30PM

## Message from the President *Continued from page 1*

with the merger of the Sugarloaf Mountain Ski Club and the Sugarloaf Regional Ski Educational Foundation (SRSEF), resulting in a single non-profit organization called the Sugarloaf Ski Club. Both of the original organizations have been raising funds to support the participation of local youth in Sugarloaf programs, although donations to the Sugarloaf Mountain Ski Club were not tax deductible. The new Sugarloaf Ski Club has been granted the IRS's 501(c)(3) designation, making donations tax deductible.

You will read in this newsletter about the generous grant to the Sugarloaf Ski Club from the King and Jean Cummings Trust, and their challenge to raise money for a new Ski Club Endowment Fund. It is very exciting to be able to continue our Community Scholarship Program while reaching out to more local kids, enabling them to enjoy skiing and riding. We believe kids should not be restricted from participating in the programs for financial reasons.

As a ski instructor, I have shared my passion for skiing with young and not-so-young folks for many decades. Our new Ski Club Endowment Fund will mean that everyone who contributes will be sharing the passion we have for our sport. Many local kids get their start in the Ski-Skate program at their school, spending just a few afternoons at Sugarloaf during the season. Now, with your help, they will be able to have more time on snow. And who knows? We might just see these kids on the US Ski Team one day!






*Former Club President Greg Foster crossing Skydiving of his list. The reorganization of the Ski Club and its ability to support the programs we do owes a great debt of gratitude to Greg for all his hard work for many years.*

# MERRIAM VINEYARDS

## Estate Grown Wines

*Russian River Valley  
Sonoma County, California*

Cabernet Sauvignon • Merlot  
Cabernet Franc • Pinot Noir  
Sauvignon Blanc



*Award Winning Wines*

707-433-4032  
11650 Los Amigos Road, Healdsburg • MerriamVineyards.com

# Maine Veterinary Medical Center

**We treat all your pet emergencies 24/7, year round, weekends and holidays.**



Our hospital is located next to Scarborough Downs in the Enterprise Business Park off Route One in Scarborough.

**207.885.1290**  
**mvmc.vet**



## News from the Ski Museum of Maine

### Ski Museum of Maine

Theresa Shanahan,  
Executive Director

256 Main St  
Kingfield, Maine

207-265-2023

Email:  
info@skimuseumof  
maine.org

Winter hours:  
Mon-Thurs  
8:00 AM - 5:00 PM

Fri-Sun  
8:00 AM - 6:00 PM

October is a very busy month for the Ski Museum of Maine! Be sure to come renew your membership at our booth at Homecoming.

There will be an Opening of the John Christie Exhibit at the Camden Public Library Jean Picker room on Sunday the 7th of October with a reception at 2pm. The museum purchased the NESM exhibit, "The Mountains of Maine, Skiing in the Pine Tree State" last fall and will officially dedicate it to John at this event.

We have taken 25 panels from the exhibit that are directly related to John and his contributions to skiing throughout Maine – from the Mountains to the Sea! This exhibit is our traveling exhibit to share at other events/resorts in Maine. We invite all to visit this memorable exhibit dedicated to John. It will remain in Camden for the month of October.

The Maine Ski Hall of Fame Committee and the Ski Museum Board of Directors invite you to the

16th annual Maine Ski Hall of Fame Induction Dinner on Saturday, October 27. The event will be held at the Grand Summit Hotel at Sunday River. This year we will be inducting 7 members to the Class of 2018 who have been influential in shaping the sport of skiing in Maine: Leon Akers, Karen Colburn, Warren Cook, Anne Dowling, Norman Libby, Kristina Sabasteanski and David Stonebreaker. This is a memorable event not to be missed. For more information or to

## Sugarloafers Since 1976



**Complete Ski Sales, Service, Rentals & Demos**  
**Rte 4 & Riley Rd Jay, ME 207-897-5445 ski-depot.com**

make a reservation please visit [www.skimuseumof-maine.org](http://www.skimuseumof-maine.org) and look at the Hall of Fame page or [www.skimaine.com/hof](http://www.skimaine.com/hof).

If you have not yet visited the museum to see our newly renovated gallery, you are missing something great! We are open 7 days a week, 9am – 5pm with tours available Monday – Friday 10am – 4pm.

A new exhibit on Maine Olympians will be launched this winter. Did you know there has been an athlete from Maine in each year since 1948? That's 26 Olympians!! (one year only a coach from Maine represented our state) Be sure to check our website for updates on this new exhibit.

## 29 Past Ski Club Presidents

Horace Chapman 1950-52	John Christie 1965-66	Tina Hinckley 1982-83
Robert Bass 1952-54	Norton Luce 1966-68	Jon Hellstedt 1983-90
Scott Scully 1954-56	Skip Skaling 1968-70	John Lacasse 1990-93
Bill Kierstead 1956-57	Peter Spalding 1970-72	Marvin Collins 1993-95
Jay Winter 1957-58	Jack Smart 1972-73	Greg Foster 1995-99
Harvey Boynton 1958-59	Bernie Carpenter 1973-75	Sue Manter 1999-2001
Leo Tague 1959-61	Bob Waddle 1975-77	Charlotte Zahn 2001-03
Burt Covert 1961-62	Charlie Murray 1977-79	Lev Steeves 2003-04
Don Pfeifle 1962-64	Frank Woodard 1979-80	Bruce Miles 2004-18
Charlie Clark 1964-65	Pat Andrews 1980-82	Virginia Bousum 2018-

# UBS Financial Services, Inc.



**Anthony R. Jessen**  
First Vice President - Investments  
Financial Advisor

One City Center, 7th Floor  
Portland, ME 04101  
Phone: 207-791-5112  
Fax: 855-249-4228  
Toll free: 800-388-8919  
[tony.jessen@ubs.com](mailto:tony.jessen@ubs.com)



# 2018 Sugarloaf Hall of Famers



Dave Stonebraker



Anne Dowling



Warren Cook

*“These three Sugarloafers will be inducted into the Maine Ski Hall of Fame October 27 at Sunday River. FMI and to reserve your seat go to [www.skimaine.com](http://www.skimaine.com)”*

**OWN A HOME IN THE WESTERN MAINE MOUNTAINS!**

**LEE BOONE**  
LOAN OFFICER

LBOONE@ACADIALENDING.COM  
(207)491-0012  
NMLS# 1631812  
Acadia Lending Group NMLS ID #370636  
[www.acadialending.com](http://www.acadialending.com)

**LOAN PROGRAMS**

- FHA 3.5% DOWN
- USDA/RD NO MONEY DOWN FOR QUALIFYING AREAS
- VA LOANS
- CONVENTIONAL FINANCING 3% + 5% DOWN OPTIONS
- CONDOMINIUM FINANCING

## CSM Real Estate



Kim Kearing  
Associate Broker

207-491-9703, [kim@csmrealestate.com](mailto:kim@csmrealestate.com)



**My 18 years of living in Carrabassett Valley and on Sugarloaf Mountain will benefit those clients who are looking to buy or sell real estate in the area. If you are searching for a reliable, knowledgeable, local broker give me a call.**



Iron Bridge \$352K  
4bd., 2ba. 2 acres, 3 car garage



Village South, 2bd, 1ba





**BIRCHWOOD  
INTERIORS**

Furniture • Flooring • Window Treatments

## Mattress Special

Buy a Serta mattress set over  
Homecoming and receive  
a \$50 gift certificate to  
D'Ellies!

# 207-237-7000

*Helping fast skiers sleep well since 1980*

Village West at Sugarloaf • info@birchwoodinteriors.com

# TRANTEN'S



Main Street, Kingfield

## We meet your grocery

A big selection of your favorite beer and  
wine beverages

Our qualified butchers will cut you a  
fresh steak, package our store-ground burger  
or de-bone our chicken for you.

Featuring all kinds of deli meats, cheeses,  
salads and fresh seafood

Talk to our deli staff about making up a party  
platter or fruit basket for your special occasion.

We also have a laundry facility

Open 7 days a week until 8:00 PM except Sundays (5:00 PM)  
On Main Street • Route 27 in Kingfield • 207-265-2202



**Bowling ~ Arcade ~ Golf  
Serving Lunch and Dinner  
Full Bar &  
Upscale Pub Style Menu**

1242 Carrabassett Dr.  
Carrabassett Valley, ME 04947  
207-235-3300



**JAVA JOE'S**  
Sugarloaf & Farmington

# CARRABASSETT COFFEE COMPANY

**Always  
drink good  
coffee.**

## 207.265.2326

[www.carrabassettcoffee.com](http://www.carrabassettcoffee.com)

*Really good coffee from Kingfield, Maine*



# News From CVA

The 2018/19 academic and training year has begun at Carrabassett Valley Academy. On Sunday, August 26th we welcomed our fall-winter and full-year term student-athletes back to campus.

With enrollment numbers up approximately 22%, CVA is also welcoming many new team members to our bolstered staff of administrators, faculty and coaches, for the upcoming year. New beginnings naturally often signal the passing of a proverbial baton, and as we open this new chapter it is with great celebration and appreci-

the many contributions of those who helped lay the foundations for success.

## Dawn Smith, Retired Director of Admissions

One such team member, Dawn Smith, provided nearly 20 years of dedication to the families and the mission of the Academy. Earlier this summer, Dawn retired from her post as Director of Admissions.

For nearly two decades, Big Dog parents and families were reassured by Dawn's patient and gentle ways. Her dedication to the



Mark, Eli and Venise Fournier on CVA's registration day.

the families of CVA was always her favorite part of the work. Being an Admissions Director at a Ski and Snowboard Academy is daunting, at best, in that there is a limited pool of potential applicants, and finding a good fit between a student and CVA's intensive program can be challenging. Over her term

of service, Dawn became a trainer and a coach to the CVA staff, helping athletic coaches to have more tools at their disposal; helping them to know how to successfully identify and bring talented students and athletes to the school. As a trusted and wise member of the Academy's Leadership Team, she was a key player



Sugarloaf's Official Real Estate Agency



Sam Punderson Deb Pierce Barb Larson Jeff Kennedy

sugarloafmountaininside.com  
207-237-2100 • realestate@sugarloaf.com

## SLOPESIDE LIVING EXPERTS

Nobody knows the Sugarloaf area like  
Mountainside Real Estate.

In the last year, our team has sold 12 times the volume of any other agency in Carrabassett Valley.

### Our Full Service Agency Offers:

- Buyer Representation
- Seller Representation
- Hotel Quartershares
- Seasonal Rentals
- All of our Properties are Listed in MLS
- Fully Staffed Office. Open 7 Days a Week
- Visit us on Main Street in the Base Village

"Let us help you find your home at the Loaf."





in shaping the unique school CVA is today.

Dawn knew CVA was restructuring the Admissions department, and hiring a new director. As the year-end drew closer she continued to work diligently and remained fully committed to CVA, playing a key role in bringing in this year's new crop of student-athletes.

It was an honor to have such a resource on the CVA team as Dawn, and she was equally honored to walk with every student-athlete family on their individual journey to decide to come to CVA. Her legacy lives with this final class of students she supported through their

admissions process, and well beyond.

### Erin Whipple, Director of Enrollment

Filling the important role that Dawn leaves was no small task. We are thus incredibly excited to announce the hiring of Erin Whipple as CVA Director of Enrollment.

Erin comes to CVA after spending four years as the owner/operator of Main Street Energy Lab, a personal training service that provides classes in strength training, cycling and running. She has an international clientele, for whom she writes online training



Erin Whipple, Director of Enrollment

plans for athletes of all levels and abilities. Her experience with this high-level training is quite personal as Erin is an avid runner, swimmer and cyclist, and will be competing in her 3rd Ironman triathlon at the end of September. This understanding of

unique individual needs and expectations will serve Erin well as she sets out to support new families through the early decision-making, application, and ultimately enrollment at the Academy.

Prior to owning her own business, Erin worked at the Orvis Retail Company, helping to develop their line of female specific fly-fishing gear and learning opportunities through their various outdoor exploration courses.

Erin holds a BA in Government from Sweet Briar College in Virginia, and a Master's degree in Public Policy and Management from the University of

*Continued on page 18*

## SUGARLOAF AREA GROCERS

For all your Sugarloaf Area Grocery needs since 1989



**Sugarloaf Groceries**  
on the mountain  
237-2200

**Mountainside Grocers**  
just before entrance to  
Sugarloaf Access Road  
237-2248

**Anni's Market**  
Main Street Kingfield  
265-2664

**Ayottes Country Store**  
in the Valley  
235-2443

John Beaupre "72" and Bob Thomas "82"  
Proprietors



In partnership with Sugarloaf and others, UMF offers an exciting new **Alpine Operations Certificate** that offers real-world experience in the skiing and snowsports industry — including internships.

#### 2017 U.S. News & World Report Ranking

- #4 Top Public Regional Colleges-North
- #5 Best Value School, Regional Colleges-North
- #7 Top Regional Colleges-North (overall, public or private)



## CVA News

*Continued from page 17*

Southern Maine. She lives in Yarmouth, ME, with her husband and four children. Two of her daughters, Chloe and Macey, will attend CVA for the Winter Term this year, participating in the Snowboarding and Alpine programs.

Erin is looking forward to being a part of the CVA team, and spending time getting to know all of the students and families in the CVA community.

## New Staff Members

CVA is also incredibly excited to welcome many new staff members across the organization, including

two new Program Directors for the Alpine and Snowboard teams. We hope you will join us in an enthusiastic Big Dog welcome for our newest team members, and be sure to say hello when you see them on the hill!

Sean Chatellard, Alpine U19/FIS Head Coach

Erin Demshar, Math & Science Teacher

Sean Flukey, Kitchen Co-Manager

Beth Hamblet, French Teacher

Georgia Hegner, English, MS Humanities, Cont.

History Teacher

Jackie Hernandez, Boardercross Coach

Todd Johnson, Snowboard & Ski Cross Program

Director

Garrett Lashar, Alpine



Erin Demshar



Garrett Lashar

Program Director

Kassandra Lawrence, High Performance Intern

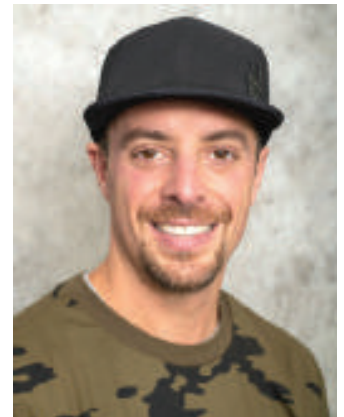
Lars Lund, Freestyle Coach

Ainsley McClachrie, English and Psychology Teacher

Janis Meyer, Business Office/Book Keeper

Michael Phelan, Ski Cross Coach

Travis Plass, Alpine U19 Men's Coach



Todd Johnson

**kw**  
**KELLERWILLIAMS.**  
REALTY  
207.879.9800

**Why live anywhere else?**

**Faron D Fahy**  
**REALTOR®**  
**faron@kw.com**  
**207.576.7039 cell**  
**carrabassettrealestate.com**

## 7th Annual WinterKids Downhill 24 Returning to Sugarloaf

Mark your calendars! The WinterKids Downhill 24 is returning to Sugarloaf on March 1-2, 9 a.m. to 9 a.m. The Downhill 24, presented by Darling's Auto Group, is a team ski and snowboard challenge and fundraiser to benefit WinterKids. It is the only annual event that brings night skiing to Sugarloaf! WinterKids will set up lights along the course for a fun-filled, round-the-clock, family friendly event. Participants will raise money to support WinterKids to help children develop

healthy lifelong habits through education and fun, outdoor winter activity. Last year's event raised a record \$300,000 from 2,237 donors! WinterKids was pleased to give back to the Sugarloaf community by donating \$10,000 to the Sugarloaf Regional Charitable Trust to help increase opportunities for children in the Carrabassett Valley area. Participants of the WinterKids Downhill 24 get their own unique fundraising web page, and prizes are awarded for those who raise the most money for WinterKids.



2018 Downhill 24 participants display DH24 fundraising total. Photo credit sdp photography.

Registration information and new event elements to be announced soon at [D24.org](http://D24.org).

WinterKids will be needing On-Mountain support during the Downhill 24

event. If you are interested in supporting our event as a volunteer, please contact Events Manager Mary-Theresa Tringale at [mtringale@winterkids.org](mailto:mtringale@winterkids.org) for more information.

394 Main Street  
Kingfield, ME 04947

[fissports2012@gmail.com](mailto:fissports2012@gmail.com)  
207.265.5100



# FIRST INLINE SKI & SPORT

Complete Racing Service • Pickup and Delivery Available

PROFESSIONAL SKI SERVICE • CUSTOM BOOT FITTING



# Sugarloaf Ski Club NEWS

On the Mountain • 9008 Main Street  
Carrabassett Valley, Maine 04947  
[www.sugarloafskiclub.com](http://www.sugarloafskiclub.com)



Circa 1970: Three inn owners socializing with Harry Baxter, General Manager of Sugarloaf. Left to right: Ed Rogers of the Red Stallion, Harry Baxter, Edna Judson of Judson's Motel, and Leo Tague of Chateau des Tague.

**INSIDE: News about stuff that only Sugarloafers care about!**

## VALLEY GAS & OIL COMPANY

*Your complete energy source for  
propane, kerosene, fuel oil and equipment*

**1.800.675.7443 • 207.265.5443**

**Fax 207.265.2987 • [www.valleygasandoil.com](http://www.valleygasandoil.com)**

*The Luce Family  
Sugarloafers since 1952!*

**P.O. Box 115 • 103 Main Street • Kingfield, Maine 04947**